



DU – 012

IV Semester B.E. (Civil) Degree Examination, December 2017/January 2018
(2K11 Scheme)

CE 406 : BUILDING DRAWING

Time : 4 Hours

Max. Marks : 100

- Instructions:** 1) Answer **any one** question **each** from Part – A and Part – B.
2) Assume **any** missing data suitably.

PART – A (Development)

1. Develop the line diagram showing the layout of a mini shopping complex shown in Figure No. 01 and draw to a suitable scale (preferably to 1 : 100) the following views :
- a) Detailed plan at sill level. 20
 - b) Front Elevation. 10
 - c) Cross sectional details along section AA. 25
 - d) Schedule and other details. 05
- (60)**

OR

2. Develop the line diagram showing the layout of a political party office shown in Figure No. 02 and draw to a suitable scale (preferably to 1 : 100) the following views :
- e) Detailed Plan at sill level. 20
 - f) Front Elevation. 10
 - g) Cross sectional details along section AA. 25
 - h) Schedule and other details. 05
- (60)**

PART – B (Design)

1. Design a 4-BHK duplex house with all necessary amenities for a nucleus family consisting of 4 members covering a plinth area of 250 Sq.m in a corner plot of 18 m × 24 m, both sides facing 15 m wide roads on North and East directions, in conformity to local Statutory Byelaw's and draw to a suitable scale (preferably to 1 : 100) the following views :
- a) Detailed Plan at sill level only. 30
 - b) Site Plan showing built up area and setbacks. 10
- (40)**

OR

2. Design a Public Library Building for general reading and reference with all necessary amenities for a maximum of 50 occupants at times, kept open between 8.00 am to 8.00 pm, covering a plinth area of 300 Sq.m in a plot of 20 m × 25 m and 20 m side facing the 20 m wide main road on South direction, in conformity to local Statutory Byelaw's and draw to a suitable scale (preferably to 1 : 100) the following views :
- a) Detailed Plan at sill level only. 30
 - b) Site Plan showing built up area and setbacks. 10
- (40)**

P.T.O.

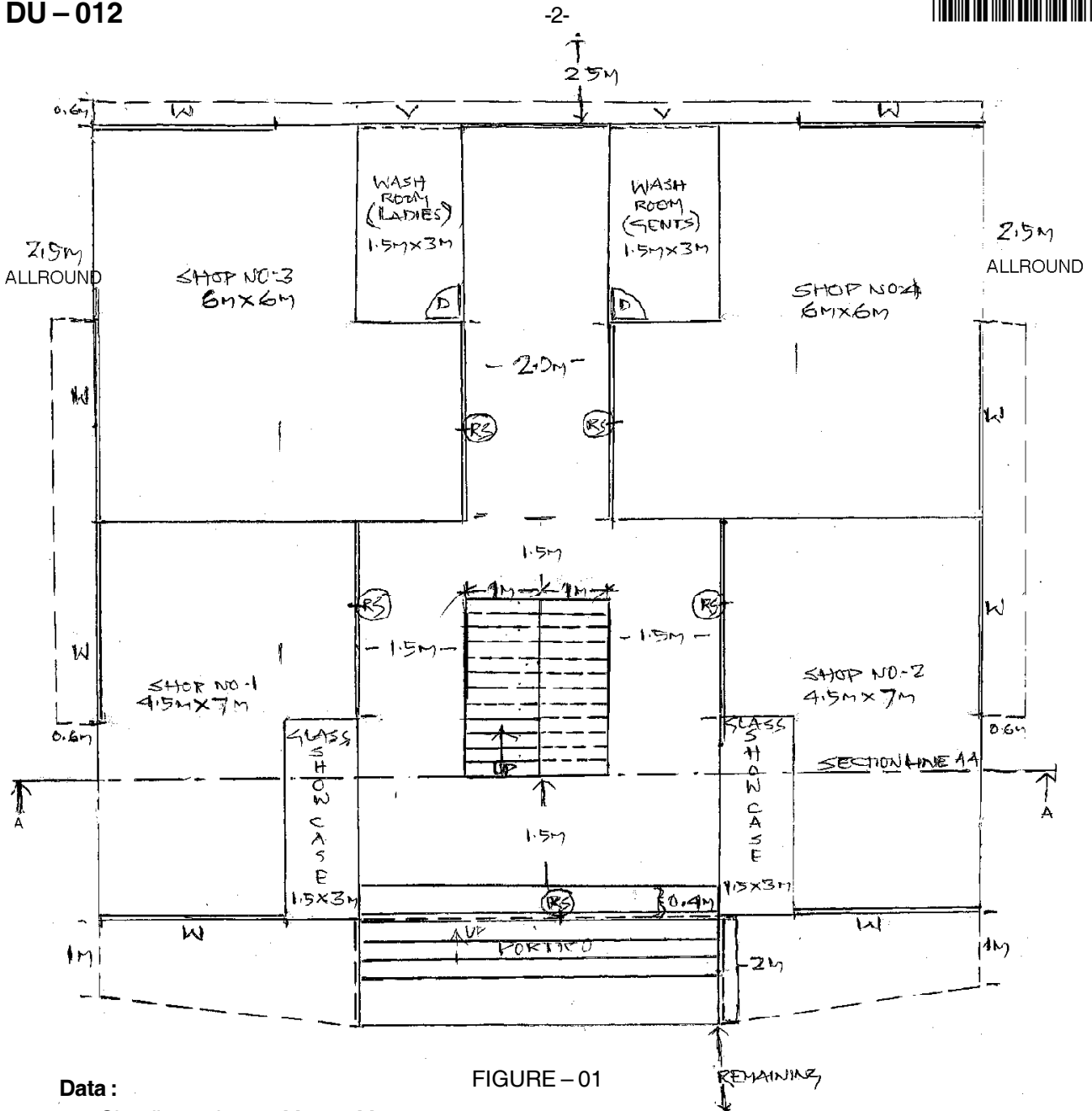


FIGURE - 01

Data :

- Site dimension 20 M x 20 M
- Thickness of main wall 300 mm
- Thickness of partition (For wash rooms only) 200 mm
- Height of ground floor = 3.9 M (Including slab thickness 150 mm)
- Height of first floor = 3.9 M (Including slab thickness 150 mm)
- Plinth height = 0.6 M from ground level
- Sill height = 0.6 M from floor finish
- Window W = 3 M x 1.82 M
- D = 1 M x 2.00 M
- Rolling shutter (RS) = 3 x 2.4 M
- Foundation depth - 1.4 M below ground level
- Tread = 300 mm
- Rise = 150 mm

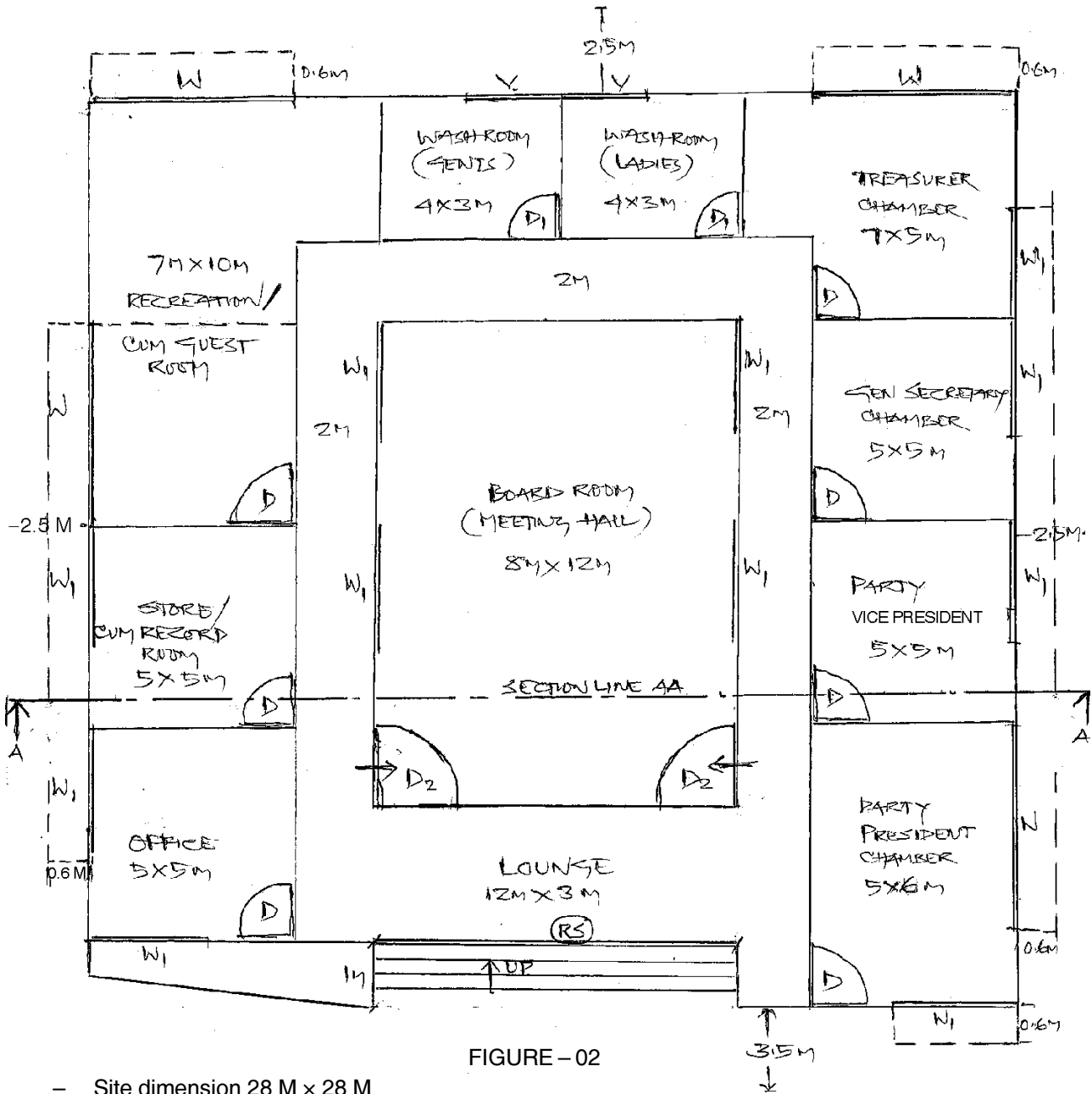


FIGURE - 02

- Site dimension 28 M x 28 M
- Thickness of main wall 300 mm
- Thickness of partition wall (For wash room only) 200 mm
- Height of building 3.9 M (Including slab thickness 150 mm)
- Parapet height - 1 M from roof top
- Plinth height - 0.6 M from ground level
- Sill height - 0.6 M from floor level
- Window W = 5 x 1.82 M
W₁ = 3 x 1.82 M
- Doors D = 1.1 x 2.4 M
D₁ = 1 x 2 M
D₂ = 2 x 2.4 M
- Rolling Shutter (RS) 8 x 2.4 M
- Foundation depth - 1.4 M below ground level
- Tread - 300 mm
- Rise - 150 mm